

GN 6319.1 | Levelling washers

single body, steel

METRIC



MATERIAL

Case-hardened steel (hardening depth 0.2 - 0.4 mm), hardness (550 + 100) HV 10.

FEATURES AND APPLICATIONS

GN 6319.1 levelling washers are suitable for locking mechanical parts on non-parallel surfaces.

The coupling of the two spherical surfaces of the washers allows a very high load resistance.

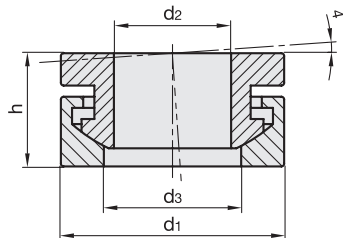
SPECIAL EXECUTIONS ON REQUEST

GN 6319.1-NI: AISI 303 stainless steel levelling washers.



- 1
- 2
- 3
- 4
- 5
- 6
- 7
- 8
- 9
- 10
- 11
- 12
- 13
- 14
- 15
- 16
- 17
- 18

Conversion Table	
1 mm = 0.039 inch	
d1	
mm	inch
13	0.51
17	0.67
21	0.83
25	0.98
32	1.26
40	1.57



METRIC

Code	Description	d1	d2	d3	h	Screws	Static load [KN]	
GN.11888	GN 6319.1-13-ST	13	6.4	7.4	7	M6	9	4
GN.11890	GN 6319.1-17-ST	17	8.4	9.7	8.5	M8	17	10
GN.11892	GN 6319.1-21-ST	21	10.5	12	10.5	M10	26	20
GN.11894	GN 6319.1-25-ST	25	13	14.8	13	M12	38	28
GN.11896	GN 6319.1-32-ST	32	17	19.7	17	M16	73	62
GN.11898	GN 6319.1-40-ST	40	21	24.6	20.3	M20	113	113

Machine elements